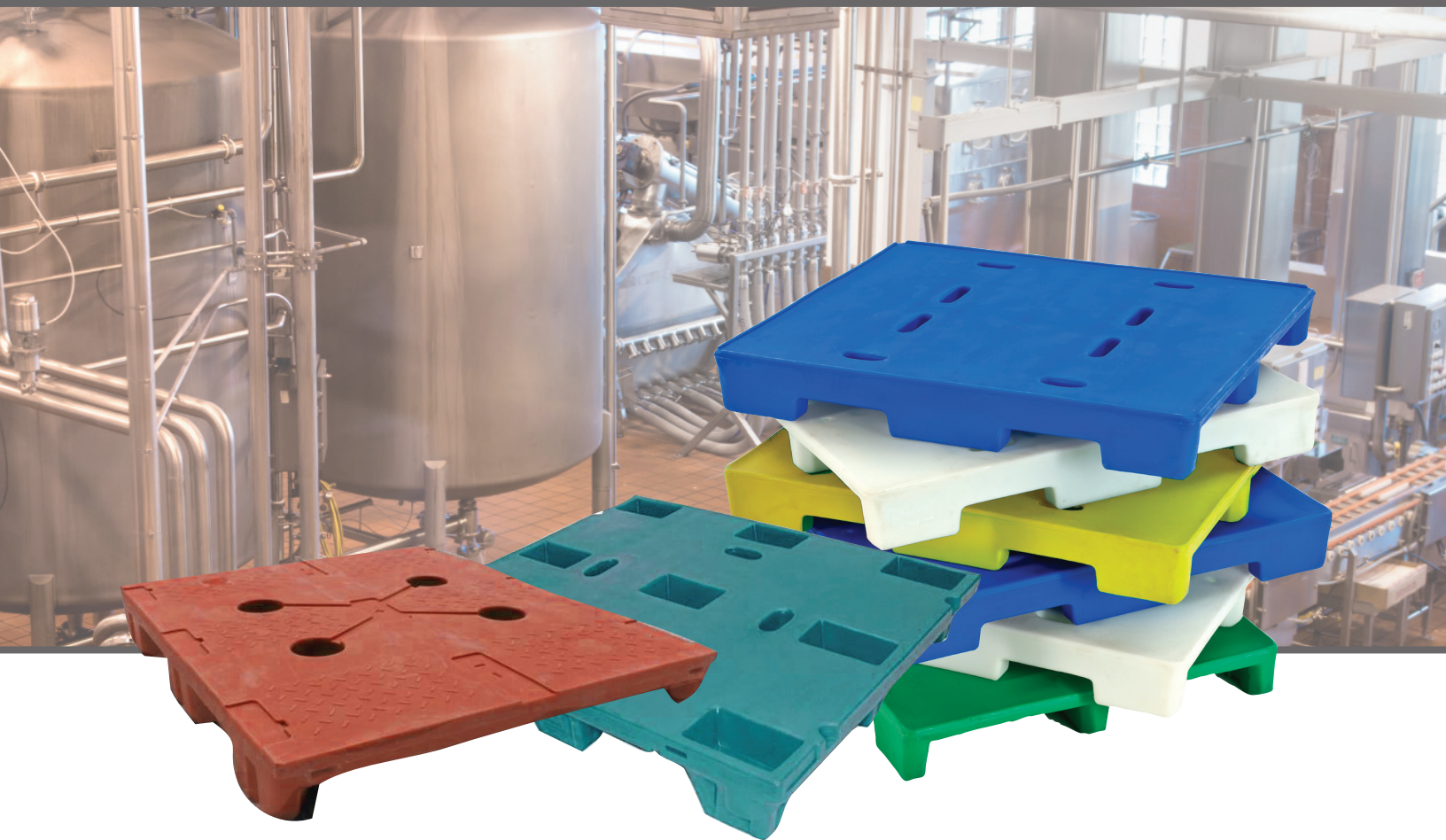


SANITARY PALLETS

Sanitary Material Handling Solutions



- *Durable - long life expectancy.*
- *Cost Effective - reduced spoilage and product damage.*
- *Clean and Sanitary - eliminates wood particles, moisture, odors & chemicals from transferring onto your products.*
- *Safe - internationally patented Deck-Lok™ safety stacking system.*

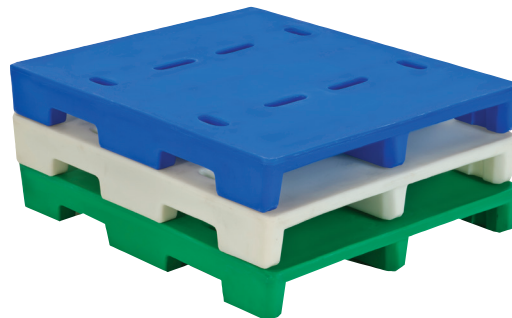


www.bonarplastics.com

SANI-PALLET®

48" x 40" x 6.25"(Height)

- 4-way forklift and pallet jack access
- One-Piece Seamless Design
- Eliminate the gaps, seams and other bacteria traps
- Molded-in drain slots
- Impact resistant LLDPE
- Thick double wall construction
- .500+ radius corners throughout design
- Optional raised outer edge
- Rackable



P4840S00-SW

48" X 40" X 6" PALLET

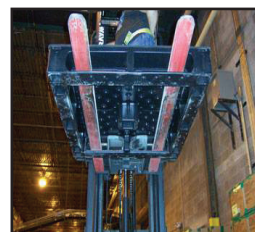
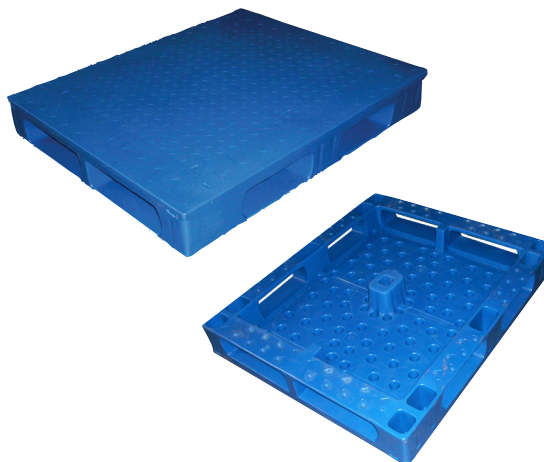
- 4-way entry
- One-piece seamless design
- Smooth top
- Under-deck hand holds
- Rackable
- Banding notches
- Stretch wrap retention wings
- Optional steel reinforcement
- Impact resistant LLDPE



P4840S00-PIKSW

48" X 40" X 6.75" PALLET

- 4-way entry
- One-piece seamless design
- Picker Pallet for order picker forklifts
- Forklift safety straps
- Non-skid top
- Rackable
- Optional customer name plate
- Stretch wrap retention wings
- Optional steel reinforcement
- Impact resistant LLDPE



P4840S00-SSSW

48" X 40" X 6" PALLET

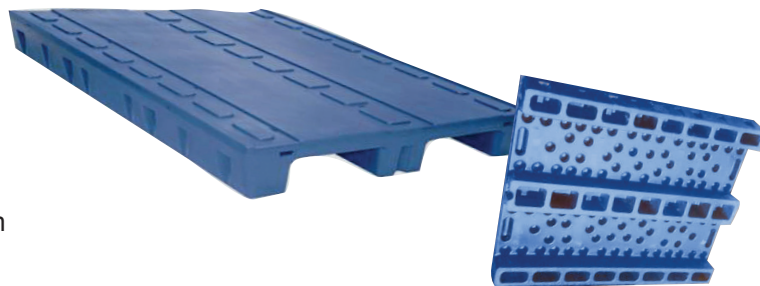
- 4-way entry
- One-piece seamless design
- Under-deck hand holds
- Slipsheet attachment accessible
- Optional steel reinforcement
- Deck-Lok® Safety Stacking System
- Rackable
- Stretch wrap retention wings
- Thru-deck hand holds
- Optional customer name plate
- Impact resistant LLDPE



P4840S00-3RSW

48" X 40" X 6.2" PALLET

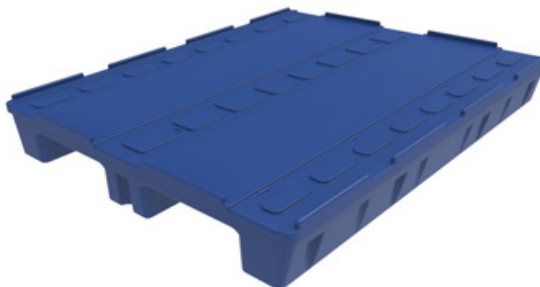
- 2-way entry
- One-Piece Seamless Design
- Three 48" long runners
- Smooth top
- Under-deck hand holds
- Deck-Lok® Safety Stacking System
- Optional steel reinforcement
- Rackable
- Optional customer name plate
- Impact resistant LLDPE



P4840LS00-3RSW

48" X 40" X 6.8" PALLET

- 2-way entry
- One-Piece Seamless Design
- .5" lip on deck
- Three 48" long runners
- Smooth top
- Under-deck hand holds
- Deck-Lok® Safety Stacking System
- Optional steel reinforcement
- Impact resistant LLDPE



P4840NST-SW

48" X 40" X 6" PALLET

- 4-way entry
- One-piece seamless design
- Heavy duty nestable
- Under-deck hand holds
- Thru-deck hand holds
- Stretch wrap retention wings
- Rackable
- Impact resistant LLDPE



P4848S00-3RSW

48" X 48" X 6.8" PALLET

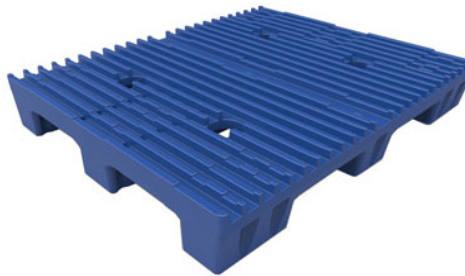
- 2-way entry
- One-piece seamless design
- Flat non-skid top
- Deck-Lok® Safety Stacking System
- Rackable
- Under deck hand holds
- Banding notches
- Stretch wrap retention wings
- Optional customer name plate
- Optional steel reinforcement
- Impact resistant LLDPE



P4840RS00

48" X 40" X 6.8" PALLET

- 4-way entry
- One-piece seamless design
- Slotted top for freezer applications
- Deck-Lok® Safety Stacking System
- Under deck hand holds
- Optional steel reinforcement
- Impact resistant LLDPE



All Bonar Pallets are:

- **Ergonomic - lightweight and easy for operators to use.**
- **Great Look - proud to display for plant tours & customers.**
- **Environmentally Friendly - recyclable material.**

Stratis/Bonar Plastics pallets do not contain the contamination chemicals 2, 4, 6 Tribromoanisole; 2,4,6 Trichloroanisole; or Decabromodiphenyl (decaDBE). Clean poly construction makes the pallets impervious to insect infestation. All pallets are manufactured from FDA compliant resins.



6940 "O" Street, Suite 100 • Lincoln, NE • 68510 • Customer Service: 800-768-6246 • Fax: 402-465-1220

Email: sales@bonarplastics.com

Other Manufacturing Locations: Lincoln, NE, Marked Tree, AR, Philippi, WV, Mancelona, MI
Chowchilla, CA • Bensenville, IL

www.bonarplastics.com