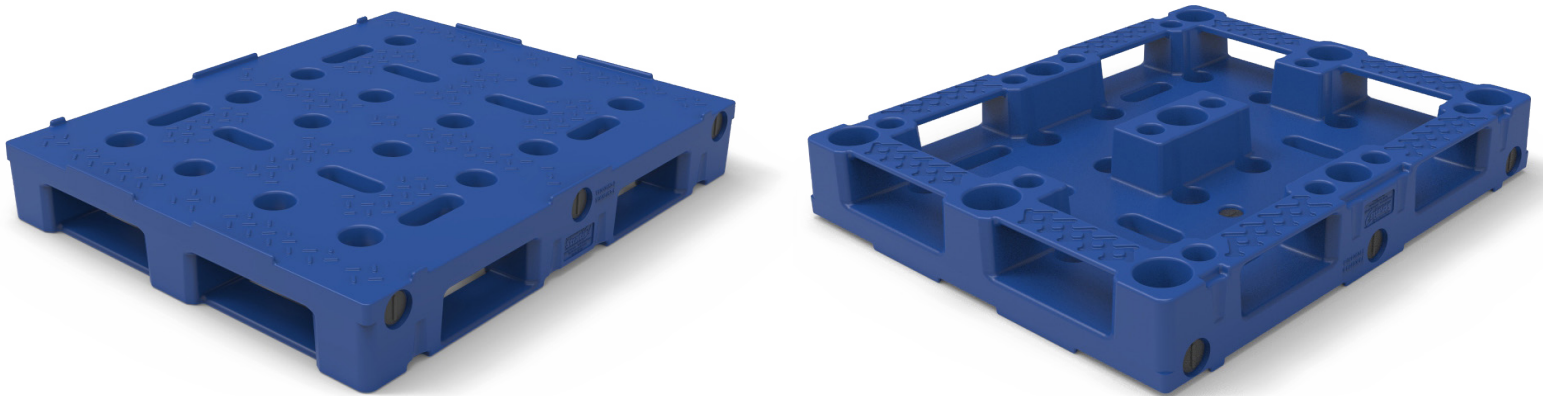




# Sani Pallet 2.0

Food processing plants constantly have to worry about recalls. In some cases, recalls can result in critical losses for your company. Stratis pallets has developed a solution to this problem by designing the only pallet on the market that offers a watertight hygienic construction with the same high useful-life-to-cost ratio offered with every Stratis brand plastic pallet.

Similar to the original Sani-Pallet, the Sani-Pallet 2.0 supports sanitary material handling practices by eliminating wood particles, moisture, odors, & chemicals from transferring onto your products. This seamless LDPE construction means you no longer have to worry about seams, gaps, holes, or other bacteria traps, making cleaning much more efficient. It also features a non-skid top capable of handling drums and other materials without sliding.



P4840LS00SANI-4S

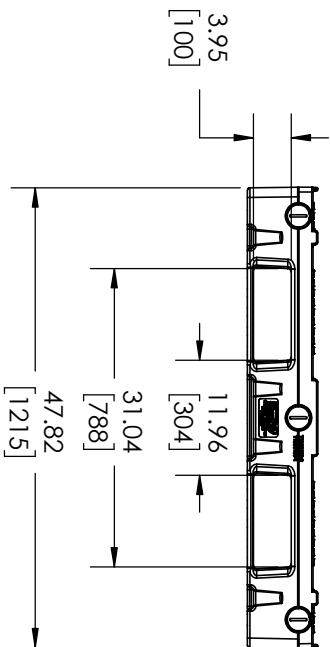
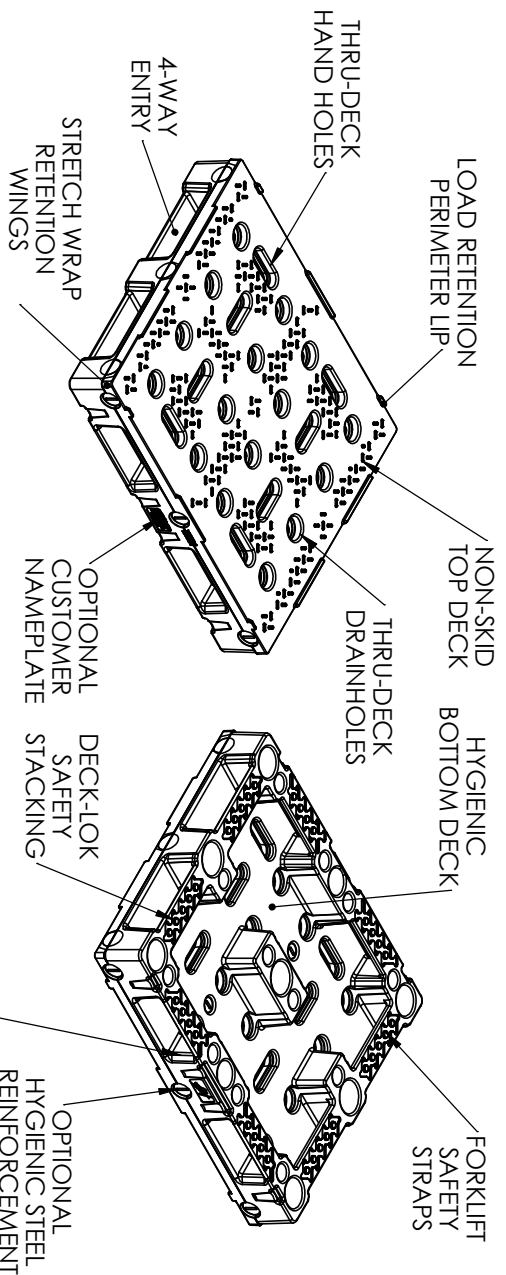
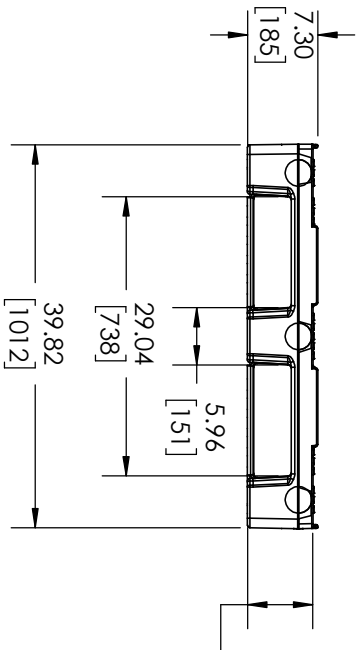
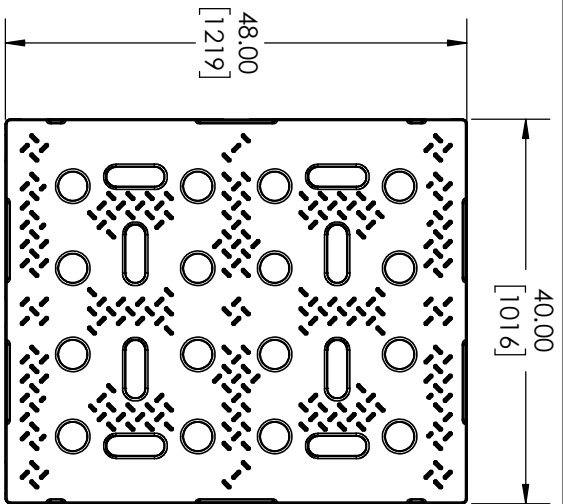
48 x 40 x 7.3 inch blue non-skid top plastic sani-pallet, top perimeter lip, Deck-Lok safety stacking feature, 4-way entry, other colors available.

## Features

- Watertight hygienic construction
- With or without steel reinforcement
- Hygienic bottom deck
- Load retention perimeter lip
- Thru-deck hand & drain holes
- Forklift safety straps
- 4-way forklift entry
- Non-skid top deck designed to safely store and transport drums
- Length: 40 in / 1016 mm
- Width: 48 in / 1219 mm
- Height: 7.3 in / 185 mm
- Weight: 45 lb
- Number of Pallets that fit inside a:
  - 20' Sea Container = 108 pallets
  - 40' Sea Container = 280 pallets
  - 53' Dry Van = 420 pallets

Pallets provided by:





**OVERALL DIMENSIONS**

40.00" x 48.00" x 7.30"  
1016mm x 1219mm x 185mm

**PALLET FEATURES**

WATERIGHT HYGIENIC CONSTRUCTION WITH OR WITHOUT STEEL REINFORCEMENT

HYGIENIC BOTTOM DECK

LOAD RETENTION PERIMETER LIP

THRU-DECK HAND HOLES

THRU-DECK DRAIN HOLES

FORKLIFT SAFETY STRAPS

4-WAY FORKLIFT ENTRY

NON-SKID TOP DECK

STRETCH WRAP RETENTION WINGS

CHAMFERED FORK ENTRY

OPTIONAL CUSTOMER NAMEPLATE

**ALL DIMENSIONS ARE IN INCHES (MM), NOMINAL, & SUBJECT TO CHANGE WITHOUT NOTICE. ALL DIMENSIONS ON MOLDED PARTS ARE SUBJECT TO A ± 3% TOLERANCE.**

DO NOT SCALE		DRAWN BY		TITLE	
STATUS:	Released	BNC		Straitis Pallet	
© SNYDER INDUSTRIES, INC., 2019				PART NO.	ENG. ID.
ALL DIMENSIONS, DESIGNS, AND INFORMATION ON THIS PRINT MUST BE REPRODUCED OR DISTRIBUTED WITHOUT WRITTEN PERMISSION OF AN OFFICER (OR HIS AGENT) OF THE FIRM.				P48401S00SANI-4S	D009812
+1 (402) 467-5221 www.dollis.com www.snydermet.com				REVISION	
Straitis A Brand of Snyder Industries				A	
				1 OF 1	