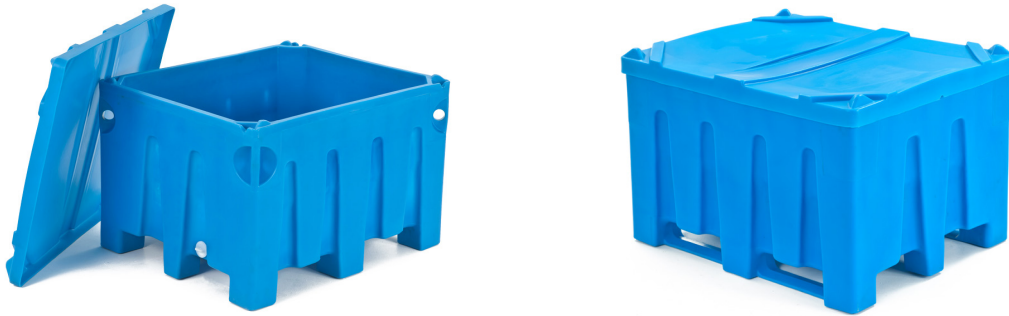


*Maximize sanitary food handling practices at your plant  
with the industry's most hygienic bulk container design!*



**SANI-BOX<sup>®</sup>**

A Sanitary Bulk Handling Solution



[www.bonarplastics.com](http://www.bonarplastics.com)

402.467.5221 | 1.800.768.6246

Made in the USA



# THE INDUSTRY'S MOST HYGIENIC SANITARY BOX

Bonar Plastics Sani-Box® eliminates the sidewall seams, gaps, holes and other bacteria traps associated with other plastic bulk boxes. Sani-Box® is the only bulk box on the market with a self-draining bottom to ensure any leftover interior residue drains completely without having to tilt, tip or dump the container during the cleaning process. Best of all, the Sani-Box® comes equipped with an impact resistant double wall seamless HDPE construction, which maximizes asset useful-life-to-cost ratios, so you can be assured optimum sanitary service for years to come.

## One Piece Seamless Design

Eliminates the gaps and seams prevalent in other plastic box designs that can contribute to trapping bacteria.

## (Optional) Rotatable Base

are available for applications involving dump equipment, where containers are inverted to discharge contents.

## Sloped Bottom With Drain

ensures any leftover residue drains completely through plug opening without having to tilt, tip or dump the container during the cleaning process.

## Thick Double Wall Construction

ensures longer lasting, more durable performance than single wall containers.

## Nesting Capability

so three empty containers can ship within the space of two.

## Stackable

with competitive containers.



Shown with Optional Lid & Drain

## TRUCKLOAD QUANTITIES

48' Truck: 112 units | 53' Truck: 120 units



## Top Lifting Eyes

are standard in the heavy duty design for applications requiring top-lifting via a hoist or crane.

## .500+ Radius Corners Throughout Design

eliminates the common honeycomb structures within injection molded boxes, which makes cleaning and inspection much easier.

## Impact Resistant HDPE

is optimized within a unique rotational molding process, resulting in superior durability characteristics.

## Open Stacking Alignment Lugs

allow containers to be securely stacked and nested with each other without any closed recessed areas or holes to trap unwanted liquids and solids.

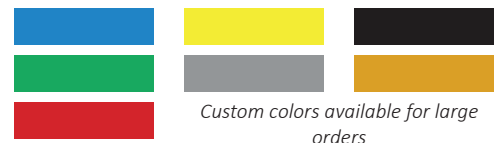
## (Optional) Sani-Lid

protects Sani-Box® contents from exterior contamination with an improved, total drainage lid design.

## Available Colors

Standard color for Sani-Box® is blue.

Minimum order for any other color is qty (6)



## Sani-Box®

### CAPACITY

24 cuft | 180 gal | 681 liters

### WEIGHT

BOX: 115 lbs | LID: 22 lbs

### WEIGHT CAPACITY

1,500 lbs per box | 6,000 lbs per 4-high max stack

### EXTERNAL

LENGTH: 48.0 in / 122 cm  
WIDTH: 40.0 in / 102 cm  
HEIGHT: 31.0 in / 79 cm

### INTERNAL

LENGTH: 41.9 in / 106 cm  
WIDTH: 33.6 in / 85 cm  
HEIGHT: 24.8 in / 63 cm